

PLYMOUTH

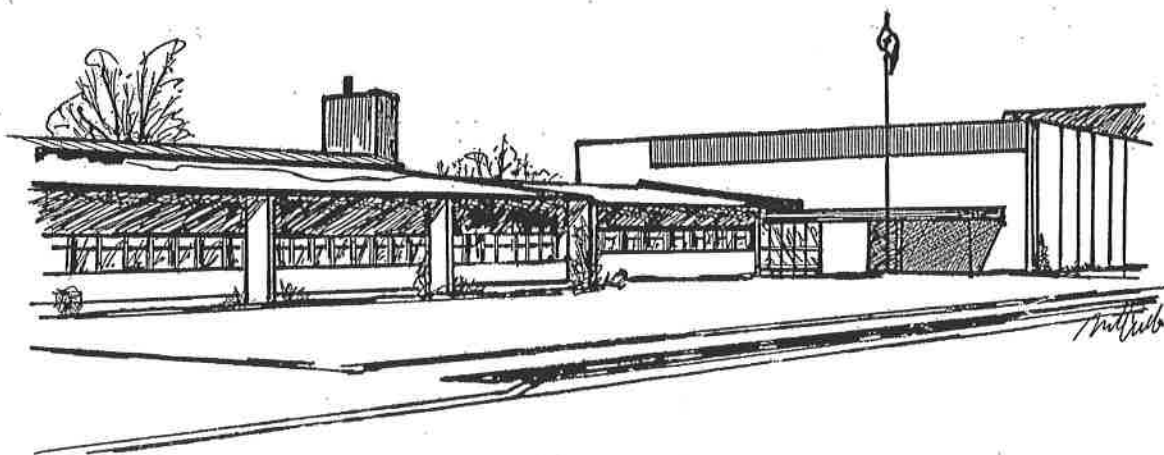
PUBLIC SCHOOL

THE LEARNING PLACE WHERE GREAT THINGS HAPPEN!

Principal: Mr. C. Glauser

Trustee: Mrs. S. Barnett

Superintendent: Mrs. S. Greer



111 First Street, Welland, ON, L3B 4S1

Phone: 905-732-4110 Fax: 905-732-2728
email: ply@dsbn.edu.on.ca

SEPTEMBER 2011 NEWSLETTER



DISTRICT SCHOOL BOARD OF NIAGARA
Achieving Success Together

PRINCIPAL'S MESSAGE

Welcome back, and for those new to the school, I look forward to meeting you in the very near future. Indeed, it is with great anticipation and excitement that we welcome all of the former Empire students and families to Plymouth School. With this in mind, our Open House and "Meet the Teacher BBQ" is on Wednesday, September 21 from 4:30-6:30 p.m. We hope to see you all there.

At Plymouth we currently have approximately 280 students from JK to grade eight that are being taught by dedicated professionals. We are also proud to offer full day Junior and Senior Kindergarten classes, which starts our students on a positive path to be successful learners.

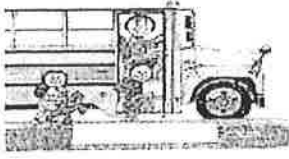
Plymouth is also the host location of the Welland Parenting and Family Literacy Centre. This centre is housed in the school and is a terrific resource for families to engage them in their child's learning and help prepare children up to the age of six for school. This centre will be a positive learning environment, with an emphasis on literacy and numeracy skills. Some of the services offered will include book lending and linking families to appropriate resources in the community. If you know of any families with young children, please encourage them to come and visit.

The addition of so many new students this year means that we will have a lot of new staff members as well. Please see the list later on in the newsletter to familiarize yourself with the new staff and what their responsibilities will be.

Once again, we will have a strong focus on literacy and numeracy in all of our classes this year as we strive to increase the ability of our students to "Read for Meaning" and learn through Problem Solving.

Looking forward to a great year at Plymouth!





IMPORTANT BUS NOTICE FOR ALL PARENTS AND STUDENTS

DSBN Policy allows only those students who qualify for bussing are allowed to ride the bus. Students may not take different buses home to go to a friend's house. They also are NOT allowed to get off at an alternate stop. This policy MUST be strictly enforced for the safety of all children. Please arrange after school plans at home in advance with your children. Thank you for your understanding.

Specific Transportation Information

Specific transportation information for students will be posted through the parent portal. You will need your child's Ontario Education Number (OEN) which is located on your child's report card. If your child is in Kindergarten and does not have an OEN, these numbers should be available to you by the end of September.

Goto www.nsts.ca. You then choose from the right hand side of school "For Parents" for your bussing information.

Change of Address

Please note that if a new bus stop is required for your child, it normally takes 72 hours during the school year to arrange from the time you change the address at the school. However, during the first few weeks of the school year a new bus stop may take a week to arrange from the time you change the address at the school.

Please note: Should there be any discrepancy, the transportation consortium has the final word.

If you have changed your child's before or after school address and it impacts the transportation arrangements made for your child, please contact your school to update this information. This information provided to NSTS automatically so that eligibility can be determined and transportation is arranged as required. Please note that bussing in this large capacity is also new to the school/staff and adjustment/routines need to be established. Thank you for your patience and understanding in this matter.

New On-Line Tools

NSTS has redesigned this website to improve accessibility and to simplify use and navigation.

Secure portals are available for parents to obtain specific information relevant to eligibility, routes, stop locations and times.

Transportation delays greater than ten (10) minutes are posted by operators on this website. You can view delays and cancellations on the website, or parents can subscribe to this feature so that delays and cancellations impacting your child's bus route can be emailed directly to you.

STUDENT ORGANIZER

All students in grades one-eight are required to purchase a school organizer (\$5.00) which provides information about our school policies and procedures and provides students with a monthly calendar, a daily agenda, weekly goal sheets, and a variety of helpful information for students.

Please be sure to read the Code of Conduct and the DSBN Internet Use Policy (for grades four-eight).

BICYCLES

Students may ride bicycles to school. They must wear helmets, and walk their bicycles on and off school property. The school will not be responsible for loss due to theft. Each bicycle must have a lock and be secured.

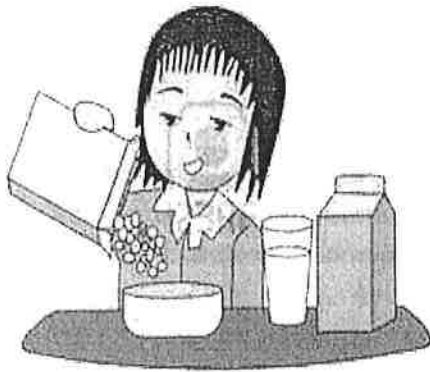


ROLLER BLADES/IN LINE SKATES SKATEBOARDS/SCOOTERS

Students who are using any of the above modes to travel to school are asked to please walk onto school property and carry their equipment. There will be no rollerblading, skating, skateboarding or use of scooters on school property.

BREAKFAST CLUB

Volunteers are needed to help set up and serve food to the students from 8:10 to 8:45 a.m. If you are available to assist at any time, please call the school at 905-732-4110. Our goal is to have a rotating schedule so that no parent volunteer is overburdened. We would like to extend a "Panther Thank You" to our existing Breakfast Club Volunteers!



Note: **Parents of participating JK/SK students (not bussed) _ MUST stay with their child during breakfast.**

YOUTH COUNSELLOR

Mr. Greg Sentance is the Youth Counsellor at Plymouth School. He is employed by the DSBN to support students who are experiencing difficulty emotionally, socially, or experiencing a difficult time due to a variety of circumstances. Students under the age of 12 must have parental written consent to be seen more than once. Greg is available to speak to parents/guardians confidentially regarding an issue affecting their child. Please feel free to call our school to speak with him on Monday afternoons, Thursday mornings and Friday afternoons. We appreciate his expertise and dedication to helping the students in our school.

MEDICATION FOR STUDENTS

Any prescribed medication that is to be administered to students during school must have an authorization form completed by your physician. Forms are available at the office.

ALLERGIES/ANAPHYLAXIS

If your child has a severe allergy (bee stings, peanut, milk, etc.) and requires medication, please come to the school office. There is a form to be filled out by a parent and the physician. A current photo is needed to attach to this form. It is the parent's responsibility to keep the school updated on their child's medical condition. This form is posted in the staff room and is reviewed at staff meetings, so that all staff are familiar with the student and their specific medication to administer.

SCHOOL PHOTOS

This year Plymouth will have photos on **Tuesday, September 27th**, 2011. This year photos will be taken by Edge Imaging.

MILK PROGRAM

This year we would like to encourage more students to participate in our milk program. The milk program will begin on Monday, September 12th. Milk will be sold for 75 cents/carton. There will be prizes and incentives for students who participate in our program. Studies show that the majority of Canadian children do not get the required amount of dairy products and this is a great way to help your child meet their nutritional requirements.



SCHOOL VISITORS

In the interest of student safety, the doors in the front hall are always locked. All school visitors (including parents) should enter in the school through the front entrance and **must** check in at the office. Students are not to use the front entrance on their own except for late arrivals and/or early dismissals when they are being picked up.

In both of these cases, students must visit the office immediately following arrival or prior to departure.

Parents are asked not to go to their child's classroom/locker to drop off lunches, coats, etc. **Items are to be left at the office** and your child will be called down to pick the item(s) up prior to their break.



This is a good time to remind you that smoking laws, forbid smoking on any part of school property, **including in your car on the parking lot**. Smoking enforcement officers have been known to come by and ticket people who are not in compliance.



Morning Break



A Month of Mini-meals for Balanced School Day
 Try the following mini-meals loaded with variety for 4 weeks of nutrition breaks at school. Include your child in making the selections.



Afternoon Break

Monday

Tuesday

Wednesday

Thursday

Friday

WEEK 1

WEEK 2

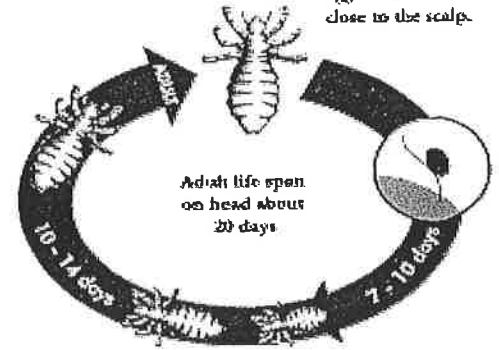
WEEK 3

WEEK 4

<p>small muffin, yogurt, applesauce</p> <p>½ cheese sandwich, broccoli & dip, fruit juice, oatmeal cookies</p>	<p>½-1 cup dry cereal, milk, raisins</p> <p>2 mini pitas with egg salad, carrot sticks & dip, milk pudding, water</p>	<p>½ bagel with cheese, orange juice</p> <p>½ bagel with cheese, red peppers & dip, plum</p>	<p>½ chicken sandwich, milk, banana</p> <p>chicken noodle soup, soda crackers, yogurt, grapes</p>	<p>½ english muffin with ham and cheese, clementine</p> <p>1 slice veggie pizza, cucumbers & dip, pear, chocolate milk</p>
<p>2 blueberry pancakes, orange sections, milk</p> <p>pasta salad with mozzarella cheese, pepper & dip, juice</p>	<p>tomato soup made with milk, whole grain crackers, kiwi pieces</p> <p>small muffin, celery & dip, fruit cup, milk</p>	<p>½ ham sandwich, applesauce, water</p> <p>½ ham sandwich, carrot sticks & dip, fig bars, milk</p>	<p>whole grain crackers, cheese cubes, pineapple chunks, water</p> <p>split pea soup, 1 slice whole wheat bread, milk pudding, peach</p>	<p>dry cereal with dried cranberries, yogurt</p> <p>cheese tortilla with salsa dip, green grapes, animal crackers, water</p>
<p>4 graham crackers with cream cheese, fruit cup</p> <p>½ roast beef sandwich, carrots & dip, plum, milk</p>	<p>muffin, banana, milk</p> <p>bean salad with mini pitas, apple, date square, water</p>	<p>raisin bread with butter, yogurt, orange juice</p> <p>leftover chili, whole wheat roll, pear, milk</p>	<p>mini pitas with grated cheese, kiwi, water</p> <p>tuna wrap, cauliflower & dip, peach, chocolate milk</p>	<p>pumpkin loaf, yogurt tube, apple juice</p> <p>macaroni & cheese, peppers & dip, grapes, water</p>
<p>1 slice banana bread, dried apricots, cheese cubes</p> <p>salmon wrap, celery sticks & dip, applesauce, chocolate milk</p>	<p>hot chocolate made with milk, 1 slice whole wheat bread with jam, banana</p> <p>mini pitas with corned beef, tossed salad (dressing on the side), milk pudding, water</p>	<p>raisin bread with cheese slice, juice</p> <p>baked beans with shredded cheese, whole wheat bread, baby carrots & dip, ice water</p>	<p>dry cereal, peach, yogurt</p> <p>hummus, pita triangles, cucumbers, tomato wedges, milk</p>	<p>muffin, pear, milk</p> <p>cheese cubes, ham slices, whole grain crackers, rice krispie square, juice</p>

Adult female glues the egg or nit to the hair close to the scalp.

HEAD LICE ALERT!!



LETTER TO PARENT /GUARDIAN OF CHILD RE: HEAD LICE

- * all students will be checked on a Friday when possible.
- * all students will receive a notice regardless of whether or not they have lice/nits.
- * all students will remain at school til the end of the day.

Child: _____ Teacher: _____ Date: _____

- Head lice were found
- Head lice eggs (darker coloured, oval, glued on the hair closer to the scalp were found in the following areas _____)
- None were found

All lice **MUST** be removed to allow re-admission to school.

RE-CHECKS ARE TO BE DONE ON MONDAY from 8:00 a.m. TO 8:30 a.m. in the physical education office.

Children absent on the Friday, will need to report to the P.E. office on Monday and found to be clear of nits/lice **BEFORE** admission to class.
Any further re-checks can be scheduled/booked with our head check team.

Please complete the section below. Bring it with you when you return with your child to the school. Parent/guardian must be present for re-checks. NO students will be allowed to return to class without a 'permission to return' note stating they have passed the re-check.

* teachers will send students back to the P.E. office if they go to class without the 'permission to return' note.

IF THE RECHECK SHOWS NITS/LICE PRESENT, THE STUDENT WILL BE SENT HOME!!

_____ was treated with _____ (Date) _____
(Child) (Product)

- We have removed all head lice
- We have checked and treated all the family members who had head lice
- We have removed all eggs
- We will continue to check for lice, and eggs everyday for the next _____

*****I am aware that my child will be sent home IF he/she is found to still have nits/lice at the re-check.*****

(Parent/Guardian signature)

(Date)

Head Check Committee



SEPTEMBER 2011



PLYMOUTH PUBLIC SCHOOL

Mon	Tue	Wed	Thu	Fri
			1	2
5	6	7	8	9
12	13	14	15 SKATING DAY Grades 1-8 will be walking to the arena 9:30 - 11:00 (most skates/helmets provided)	16
19	20 MAD SCIENCE 11:30 a.m. Grade 3, 3/4, & 4 to Water Festival at Balls Falls	21 MEET THE TEACHER BBQ 4:30-6:30 P.M.	22 MEET THE TEACHER BBQ 4:30-6:30 P.M.	23 EARLY RELEASE DAY (NO AFTERNOON CLASSES)
26	27 PICTURE DAY 1st SCHOOL COUNCIL MEETING—6:00 p.m.	28	29 HEP B & HPV PRESENTATION TO GRADE 7 & 8's	30

TERRY FOX COLLECTION starts on Monday, September 19-Friday September 22.

Monday—Pennies, Tuesday—Nickels & Dimes, Wednesday - Quarters,

Thursday—Loonies, Friday—Toonies .

Saturday, September 24

War of 1812 Trip— 9:30 A.M-3:00 P.M.

Be here to catch the bus by 9:15 a.m.